



5609 ENTERPRISE 5628



## 5609 ENTERPRISE 5628

Model number: 57ENT28563AH20

3 beds • 2 baths • 1568 sq.ft. • 28' width • 56' depth

Our home building facilities invest in continuous product and process improvements. Plans, dimensions, features, materials, specifications and availability are subject to change without notice or obligation. Renderings and floor plans are representative likenesses of our homes and may differ from the actual homes. We invite you to tour a Home Center near you and inspect the highest value in quality housing available or call (704) 484-1640 to speak with a Home Consultant. Copyright 2017, CMH. All rights reserved.

<https://www.claytonhomesofshelby.com>

## CLAYTON HOMES-SHELBY

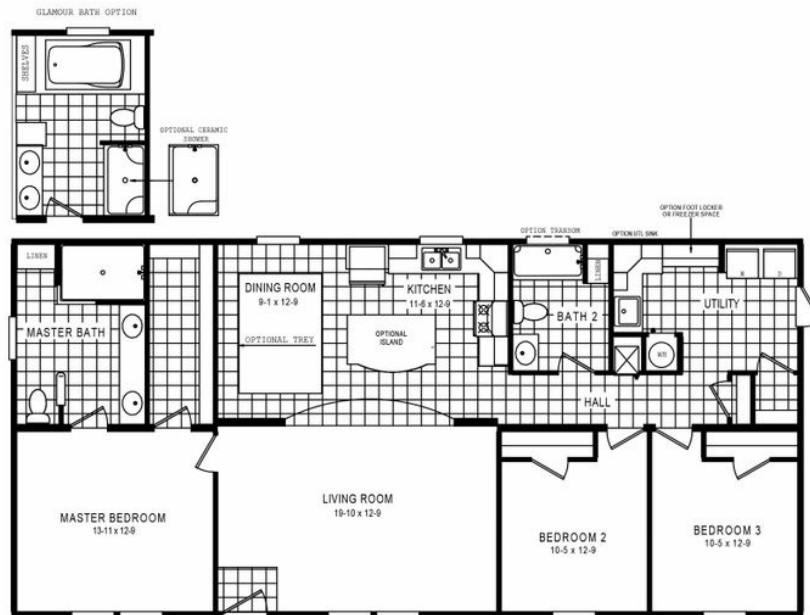
1640 E. DIXON BLVD  
SHELBY, NC 28150

Monday - Thursday: 9am - 6pm  
Friday: 9am - 6pm  
Saturday: 9am - 5pm  
Sunday: Closed

(704) 484-1640



# 5609 ENTERPRISE 5628



## 5609 ENTERPRISE 5628 Model number: 57ENT28563AH20

3 beds • 2 baths • 1568 sq.ft. • 28' width • 56' depth

Our home building facilities invest in continuous product and process improvements. Plans, dimensions, features, materials, specifications and availability are subject to change without notice or obligation. Renderings and floor plans are representative likenesses of our homes and may differ from the actual homes. We invite you to tour a Home Center near you and inspect the highest value in quality housing available or call (704) 484-1640 to speak with a Home Consultant. Copyright 2017, CMH. All rights reserved.

<https://www.claytonhomesofshelby.com>

### CLAYTON HOMES-SHELBY

1640 E. DIXON BLVD  
SHELBY, NC 28150

Monday - Thursday: 9am - 6pm  
Friday: 9am - 6pm  
Saturday: 9am - 5pm  
Sunday: Closed

(704) 484-1640